



TO LET

Stromness Road, Southend-On-Sea SS2 4JG

£995 PCM Deposit Required - £1,148 Council Tax Band - A

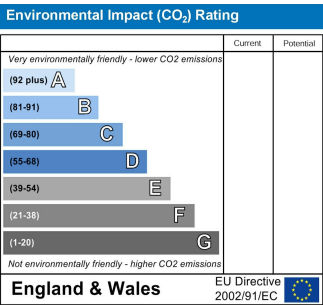
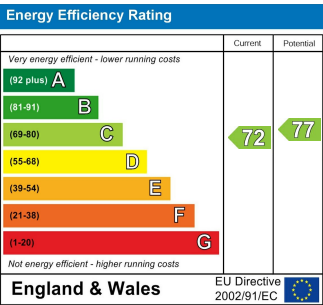
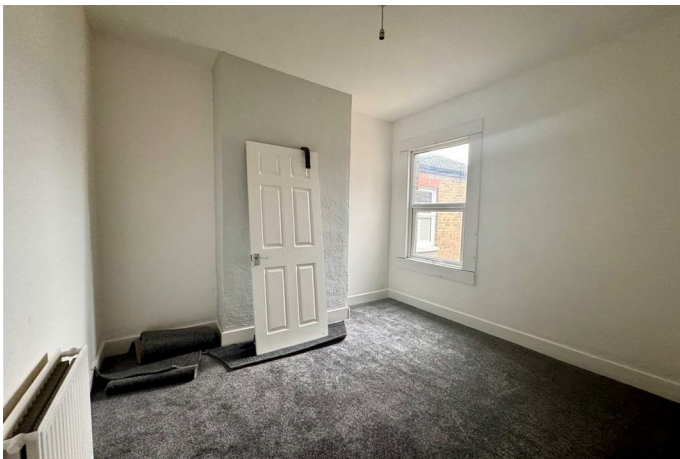
- One Bedroom Flat
- First Floor
- Great Size Living Room
- Large Bedroom
- Double Glazed Throughout
- Modern Kitchen
- Modern Bathroom
- Gas Central Heating (n/t)
- Central Southend Location
- Call Now To Arrange A Viewing

Appointmoor Rental
72 The Ridgeway, Chalkwell, Westcliff, Essex, SS0 8NU
T. 01702 719 966 W. appointmoor.co.uk

appointmoor

Description

One bedroom FIRST FLOOR FLAT in the heart of the Southchurch Village. The kitchen has recently been replaced, modern fitted flooring, recently redecorated throughout. Great connections in and around the City. Double glazed throughout and Gas Central Heating (n/t). Viewing is highly recommended. Please note this property comes with a separate dining room.



AGENTS NOTES: Every care has been taken with the preparation of these particulars, but complete accuracy cannot be guaranteed. If there is any point, which is of particular importance to you, please obtain professional confirmation. Alternatively, we will be pleased to check the information for you. All measurements quoted are approximate. Floor plans are not to scale. The Fixtures, Fittings & Appliances have not been tested and therefore no guarantee can be given that they are in working order. Photographs are reproduced for general information, and it cannot be inferred that any item shown is included in the sale.

VIEWINGS: BY APPOINTMOOR ESTATES ONLY